

Acoustic wall

Acoustic decorative wall panel



“The revolution of silence”

Transform any space with Acoustic Wall

Acoustic Wall is a **decorative wall covering** with sound-absorbing, perfect for decorating and enhancing all types of environments, both residential and commercial.

It is manufactured from **100% recyclable PET** using digital printing technology. The quality of its designs, along with its velvety finish, offers a unique aesthetic and sensory experience.

Acoustic Wall is available in **12 different designs** with the following characteristics:

- Panels 2600 mm high x 600 mm wide
- 9 mm thick
- Fire resistance Bs2d0
- 2 panels per box
- Seamless pattern across all designs
- Digitally printed
- Easy installation using self-adhesive velcro

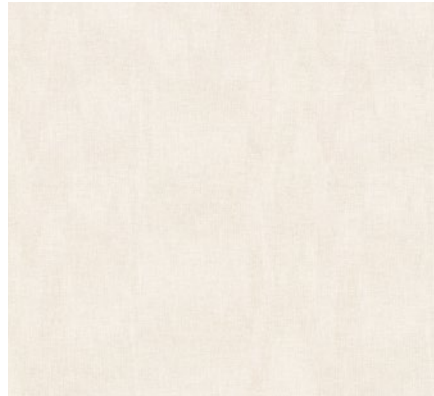


Acoustic decorative wall panel

Discover our carefully curated selection of designs that will allow you to decorate any room, creating tranquil and pleasant environments.



AW01 Dandelion Soft



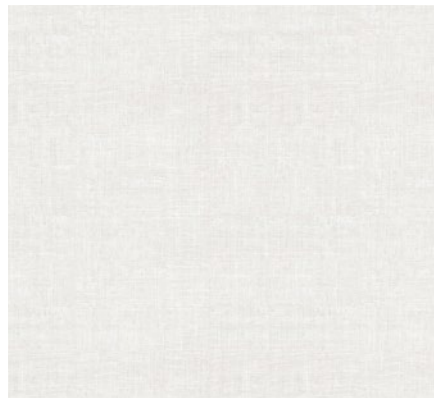
AW02 Natural Linen



AW03 Block Earth



AW04 Block Cement



AW05 Textile Mist



AW07 Sand Weave



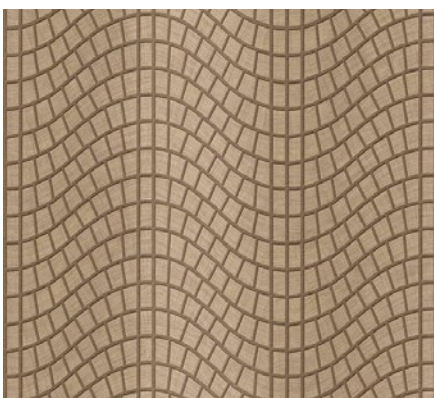
AW12 Botanical



AW13 Linear Sap



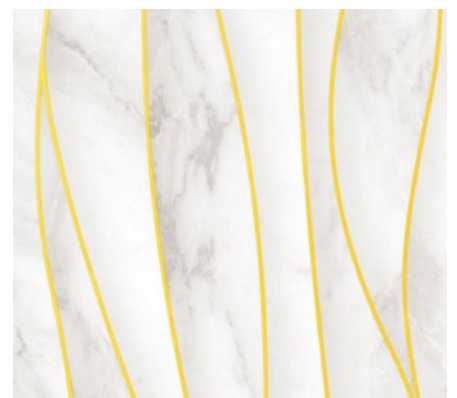
AW16 Dandelion Silk



AW17 Geo Mocha



AW18 Vortex Grey



AW19 Carrara Lines

Design that inspires unique projects

Large format, minimal thickness, maximum lightness.
2600 x 600 x 9 mm dimensions that adapt to any project.



AW04 Block Cement



Mix & Match design



AW03 Block Earth



Mix & Match design

Superior sound absorption

Acoustic Wall has a sound **absorption capacity 8 to 10 times greater** than materials such as glass, concrete or plasterboard, and up to **twice as great as traditional slatted walls**. More silence, more comfort, more style. Where other falls short, **Acoustic Wall makes the difference**.



AW01 Dandelion Soft



Mix & Match design



AW13 Linear Sap



Designed for everyday use

Durable and easy to maintain.

A finish designed to accompany you every day, resistant and practical without sacrificing beauty.



AW12 Botanical

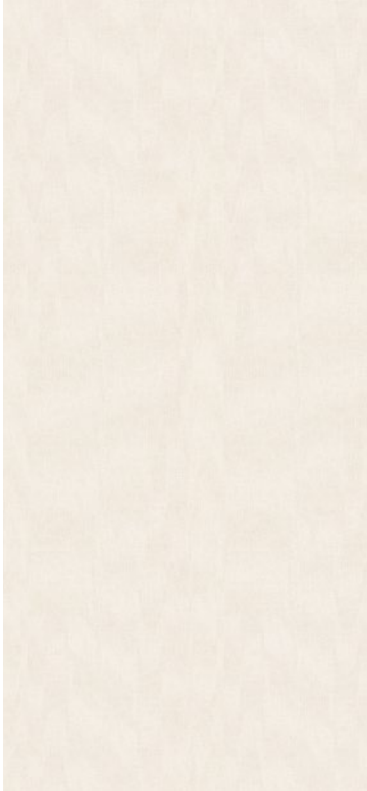


AW07 Sand Weave



Durability that inspires confidence

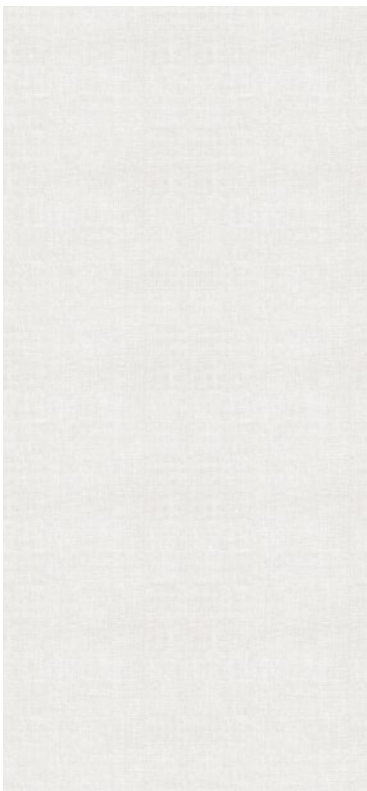
The **PRO collection** doesn't just shine on its own: some designs enhance each other, creating unique compositions. **Textile textures** soften more urban finishes, while **delicate motifs** add warmth to mineral surfaces. Inspire your project with combinations that balance contrast and harmony.



AW02 Natural Linen



Mix & Match design



AW05 Textile Mist



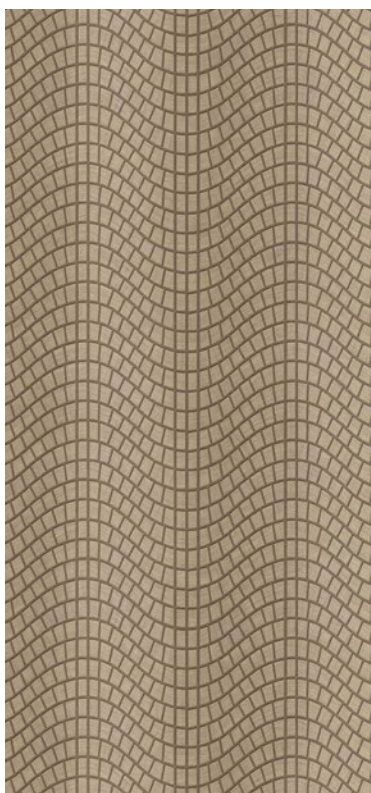
Mix & Match design

Endless possibilities

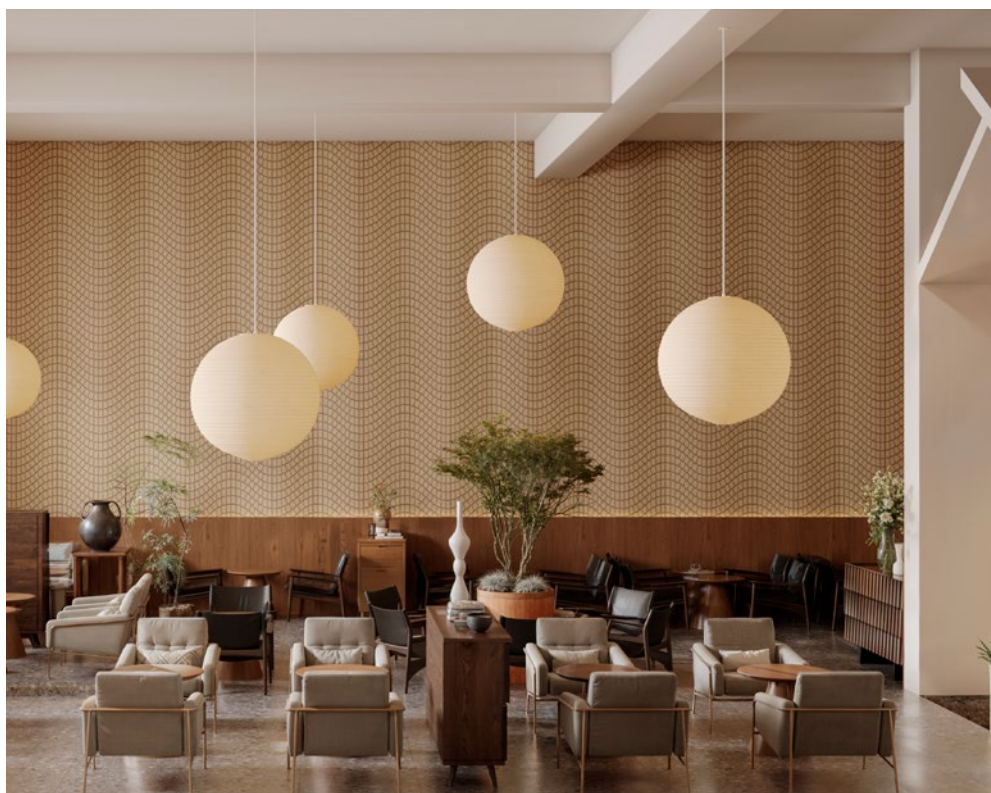
Its balanced proportions allow for the creation of harmonious compositions, from continuous murals with rhythm and contrast.



AW16 Dandelion Silk



AW17 Geo Mocha



Sustainability with purpose

Made from 100% recyclable PET, this collection embraces responsible design, transforming spaces without compromising the planet's future. A collection that unites environmental awareness and timeless beauty.



AW18 Vortex Grey



AW19 Carrara Lines




Mix and Match designs

We've selected these designs so they can be combined to create dynamic, inviting spaces full of personality. Their patterns and textures complement each other, allowing compositions within the same area.



Technical documentation

Technical data

CHARACTERISTICS	VALUES	NORM
Composition	100% PET	 Technical data
Dimensions (height x width)	2600 x 600 mm	
Thickness (mm)	9 mm	
Box	2 panels per box	
Weight per box	7,2 kg	
Reaction to fire	Bs2d0 *	
Practical absorption coefficient (α_p) according to frequency (Hz)	Direct wall installation	EN ISO 354:2004
500	0,15	
1000	0,43	
2000	0,80	
Average absorption coefficient (α_m)	0,46 **	EN 12667:2001
Average thermal conductivity	0,043 W/m K **	
Average thermal resistance	0,232 m ² K/W **	
* This rating is conditional upon installation with self-adhesive velcro tape. ** Final validation pending.		

Instructions

Acoustic Wall panel installation

Step 1. Area measurement

Carefully measure the surface where you will install the panels. Be sure to note the overall dimensions and plan the joint layout before you begin cutting.



Full Instructions

Step 2. Cutting the panel

Mark the measurements directly onto the panel and cut it with a sharp cutter, using a metal ruler to achieve a straight and precise cut

Step 3. Placing the Velcro

Attach the adhesive Velcro strips to the back of the panel.

Place one strip near the inner edge, and another so that half of its width adheres to the panel while the other half remains free, extending outward.

This "free" part will serve to connect the next panel, ensuring continuity between pieces.

Step 4. Removing the adhesive backing

Once the strips are in place, remove the protective film to expose the adhesive side that will be fixed to the wall.

Step 5. Installing the first panel

Position the first panel at the starting corner, using a level to ensure it is perfectly aligned.

Press firmly for a few seconds until the Velcro adhesive is securely fixed to the surface.

Step 6. Joining the next panels

To continue the installation, apply a new Velcro strip along the edge of the next panel, making sure that half adheres to the panel and half extends outward, allowing it to join with the previous one.

Align and press to ensure a firm and continuous connection.

 Acoustic wall
by  **BARIPERFIL**